

NORTHWEST CORNER
OF SECTION 6

BOUSE ROAD 66' WIDE

N 89°59'58" E 643.57'

N 89°59'58" E 422.00'

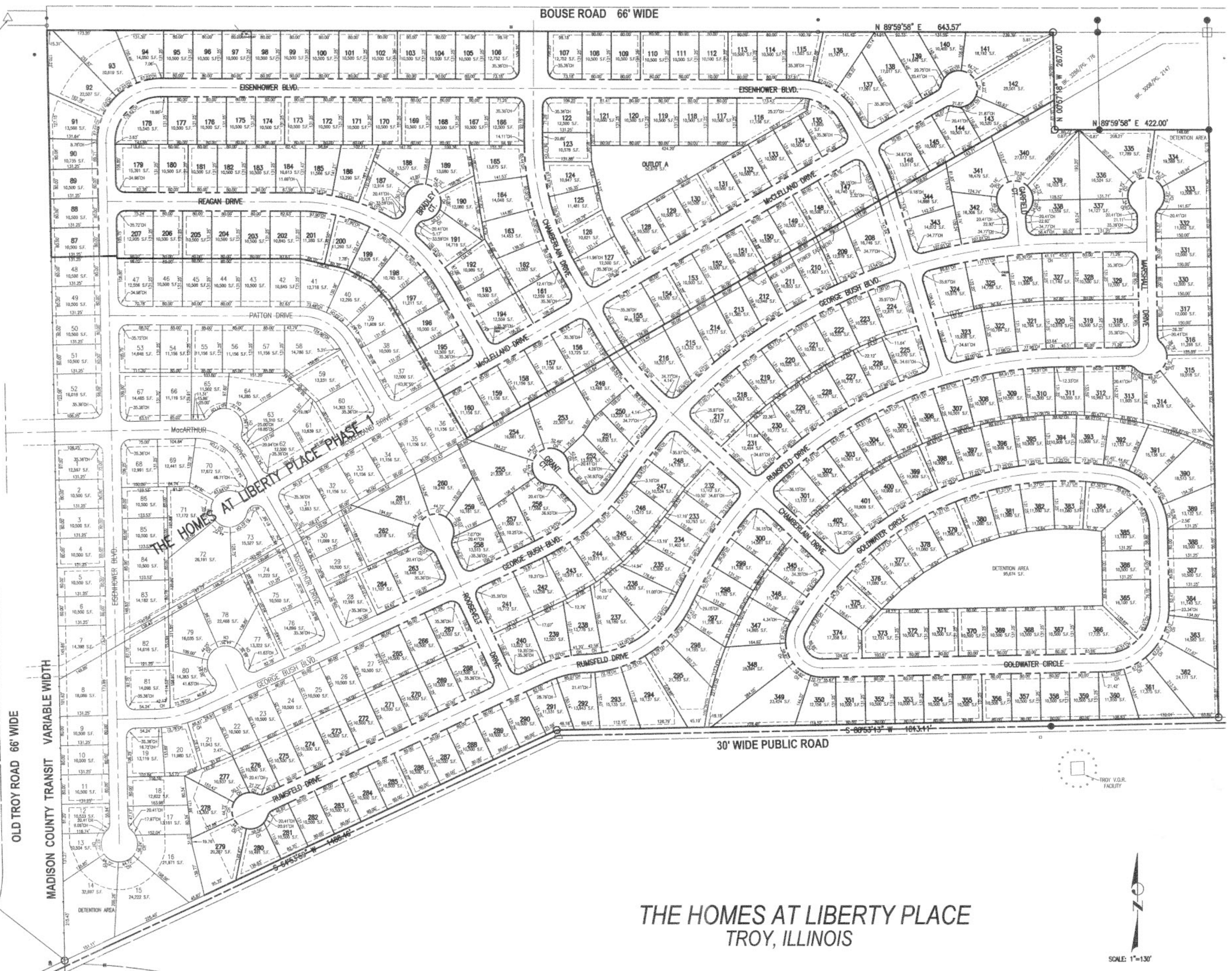
OLD TROY ROAD 66' WIDE

MADISON COUNTY TRANSIT VARIABLE WIDTH

30' WIDE PUBLIC ROAD

SOUTHWEST CORNER
OF NORTHWEST 1/4
OF SECTION 6

NOTICE: Distances, dimensions and information shown on the maps in this advertising brochure are for illustration purposes only. Their accuracy is not guaranteed or warranted, and should not be relied upon. The official plat, on file with the Recorder's Office of the county in which the subdivision is located, governs over the maps herein. Refer to the official plat for locations and dimensions of the lots, easements, roadways, rights of way, building setbacks, restrictions and other matters affecting the property. Consult with a surveyor, engineer or architect regarding questions about the property.



THE HOMES AT LIBERTY PLACE TROY, ILLINOIS

SCALE: 1"=130'