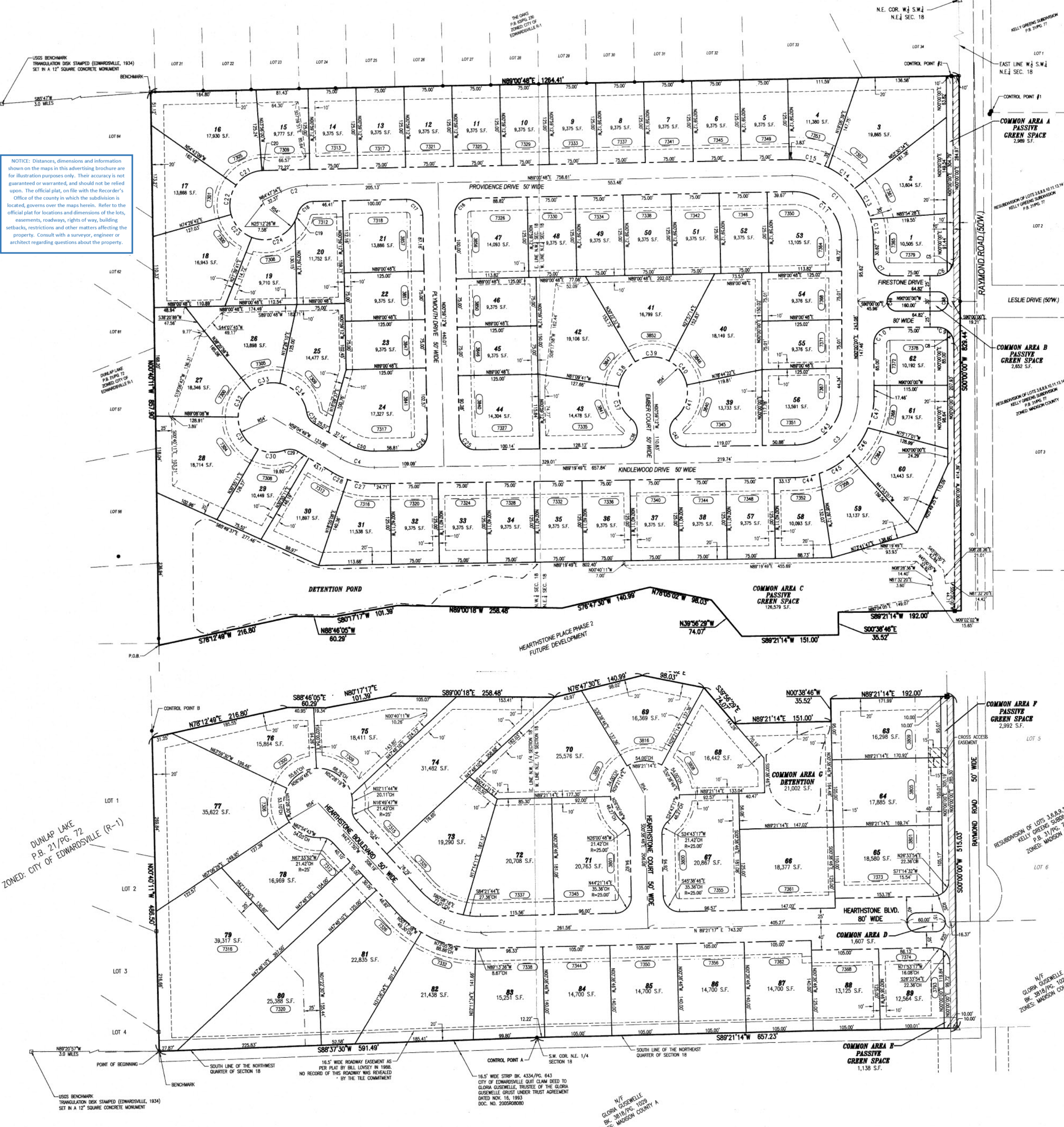


NOTICE: Distances, dimensions and information shown on the maps in this advertising brochure are for illustration purposes only. Their accuracy is not guaranteed or warranted, and should not be relied upon. The official plat, on file with the Recorder's Office of the county in which the subdivision is located, governs over the maps herein. Refer to the official plat for locations and dimensions of the lots, easements, roadways, rights of way, building setbacks, restrictions and other matters affecting the property. Consult with a surveyor, engineer or architect regarding questions about the property.



USGS BENCHMARK  
TRIANGULATION DISK STAMPED (EDWARDSVILLE, 1934)  
SET IN A 12" SQUARE CONCRETE MONUMENT

DUNLAP LAKE  
P.B. 21/Pg. 72  
ZONED: CITY OF EDWARDSVILLE (R-1)

USGS BENCHMARK  
TRIANGULATION DISK STAMPED (EDWARDSVILLE, 1934)  
SET IN A 12" SQUARE CONCRETE MONUMENT

16.5' WIDE ROADWAY EASEMENT AS PER PLAT BY BILL LOVICK IN 1988. NO RECORD OF THIS ROADWAY WAS REVEALED BY THE TILE COMMITMENT

16.5' WIDE STRIP BK. 4334/Pg. 643 CITY OF EDWARDSVILLE QUIT CLAIM DEED TO GLORIA GUSEWELLE, TRUSTEE OF THE GLORIA GUSEWELLE TRUST UNDER TRUST AGREEMENT DATED NOV. 16, 1993 DOC. NO. 2005R08080

N/W GLORIA GUSEWELLE BK. 3818/Pg. 1029 ZONES: MADISON COUNTY

COMMON AREA A  
PASSIVE GREEN SPACE  
2,969 S.F.

COMMON AREA B  
PASSIVE GREEN SPACE  
2,652 S.F.

COMMON AREA C  
PASSIVE GREEN SPACE  
126,379 S.F.

COMMON AREA F  
PASSIVE GREEN SPACE  
2,992 S.F.

COMMON AREA C  
DETENTION  
21,002 S.F.

COMMON AREA D  
1,607 S.F.

COMMON AREA E  
PASSIVE GREEN SPACE  
1,138 S.F.

RESUBDIVISION OF LOTS 3, 6, 8, 9, 10, 11, 12, 14  
KELLY GREENS SUBDIVISION  
P.B. 31/Pg. 77  
ZONED: MADISON COUNTY

N/W GLORIA GUSEWELLE BK. 3818/Pg. 1029 ZONES: MADISON COUNTY